

Year 7 Spring 1 Characters in Music

Pink Panther Theme Tune



To play the theme for Pink Panther

To identify the key musical features used to in a specific pieces

To use a variety of musical features to create a theme tune for a character

To collaborate with others to create a theme tune and suggest improvements

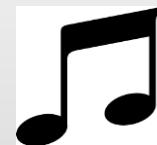
Key Vocabulary

Genre / Style – Jazz

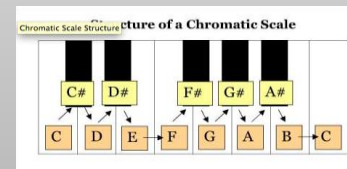
Rhythm – Uneven, jumpy rhythms

Texture – Melody, Accompaniment

Timbre – Big Band, Saxophone, Brass, Strings, Percussion, Electronic, Synthesiser



Pitch - Chromatic notes



The importance of music to match the mood

Major and Minor chords can affect the mood making a piece sound angry, sad, calm, jolly

Experiment with dotted or **staccato** (short and detached) catchy rhythms and **legato** (smooth) melodies

Creating melody or accompaniment to capture the personality of a cartoon character

Composing - Top Tips for creating your own theme tune.

Use adjectives to describe the way your character moves, it's voice, it's size, it's mood.

Choose an instrument sound on the keyboard that matches the character.

Create a melody or rhythmic idea, then try it backwards or higher /lower to develop your piece.

Combine with the accompaniment– always feel the pulse to keep in time (good ensemble). Choose from riffs, patterns, chords, repeated notes.

Structure the music into a beginning, middle & end. Aim to develop and improve the piece.