

# Using Lexia® PowerUp Literacy® at Home

## Tips for Remote Learning

Lexia PowerUp Literacy is a motivating, computer-based program that adapts literacy instruction to the specific needs of each learner. The activities in PowerUp build on your school's English Language Arts classroom curriculum, focusing on developing skills in key areas.

### How does my reader log in?

Getting started is easy! Just follow these guidelines on a [supported device](#):

1. Get your device ready. PowerUp works on computers and Chromebooks in a supported web browser, as well as on iPads. If you are using an iPad, download the free app: Lexia PowerUp.
2. Locate your school's instructions for logging in. These will usually include where to log in (e.g., via a school portal, via [Clever](#), or direct login to [lexiapowerup.com](#)), your teacher's email address, and your reader's username and password.
3. Log in using the method described by your reader's school. If needed, complete the one-time device setup by entering their teacher email address.

For additional information about supported devices or technical requirements, visit Lexia's [Support for Families](#) page or the [Lexia Help Center](#). Technical questions can also be directed to the Lexia Support Team at [support@lexialearning.com](mailto:support@lexialearning.com).

**Please note that Lexia Customer Support is not able to provide pupil usernames or passwords, or teacher emails.**

### How can I support my reader's online learning?

#### Schedule time for learning.

Try to set a schedule that will help your reader reach their personalised weekly goal. Talk about the progress your reader is making toward their weekly time goal and the number of units they've completed. Keep in mind that the target number of minutes is for the entire week, not per day!

#### Set up for success.

PowerUp supports learning with audio directions, questions, and instruction. Try to provide a quiet space for learning. (Headphones can be helpful but aren't necessary.)

#### Support independent learning.

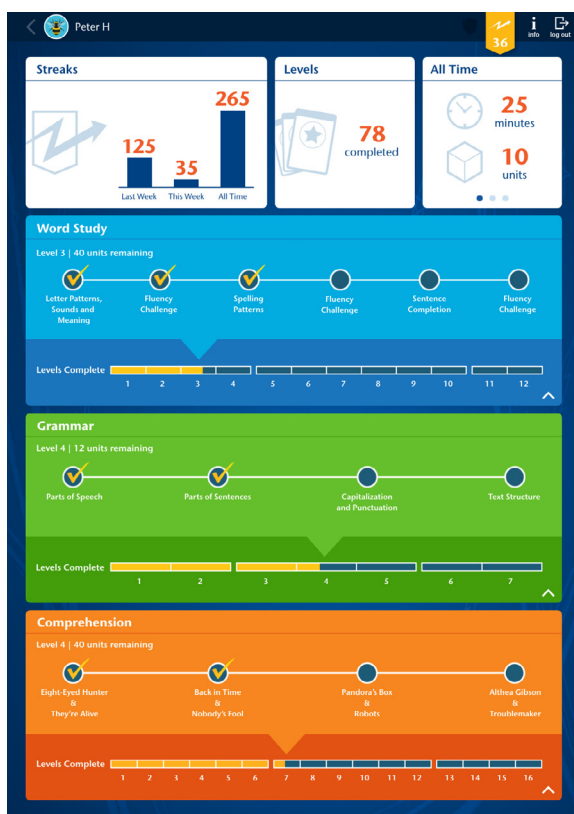
It's important to let your reader work in PowerUp without help from parents, siblings, or other caregivers. PowerUp is designed to give support and instruction that helps pupils when they need it.

- Pupils set goals for their work in PowerUp and select a skill area to focus on each session. Once pupils have completed their weekly target minutes in a skill area, it is closed until the goal for other skill areas have been completed.
- Point out the hints button when available. It is located in the upper right of the screen and provides access to instructional tips to support learning.
- Remind your reader to complete a unit before logging off. The green progress bar at the bottom of the page fills up when the unit is complete.

- Have your reader log out by going back to the dashboard and selecting the X in the upper left. A confirmation message will be shown and logout is complete when the login screen displays. Logging out completely is important to accurately reflect the time your reader spends on each activity.

### Monitor progress and celebrate success!

Select the *Your Progress* tile on the Pupil Dashboard to see an overview of your reader's progress, including streaks, time in the program, and more.



- Progress and performance in PowerUp is reported directly to teachers so they can provide additional help when needed. During periods of remote learning, teachers may share this information with you and make specific recommendations for you to support your reader.
- Every time pupils log in, they are making progress toward their reading goals. Achievement certificates may be sent home from teachers.

### What resources may be used to support literacy learning at home?

As your reader works in PowerUp, their teacher receives progress and performance updates. Based on this information, teachers may share specific resources to support learning at home.

**Lexia Anchor Charts** are a downloadable tool used to support instruction and promote academic success. Anchor Charts can be viewed online for instruction or used as study guides.

**Lexia Skill Builders** are worksheets for additional practice. Lexia Skill Builders are recommended after pupils complete a PowerUp level. They can be printed or completed digitally.

**Lexia Read @ Home Newsletters** offer hands-on activity ideas to promote literacy development at home. With options for all levels, these fun games and projects can be completed with items that you may already have at home.

Visit Lexia's [At-Home Resources Hub](#) to directly access these instructional resources and more, or follow Lexia Learning on [Twitter](#), [Facebook](#), and [LinkedIn](#) to view tips and resources.