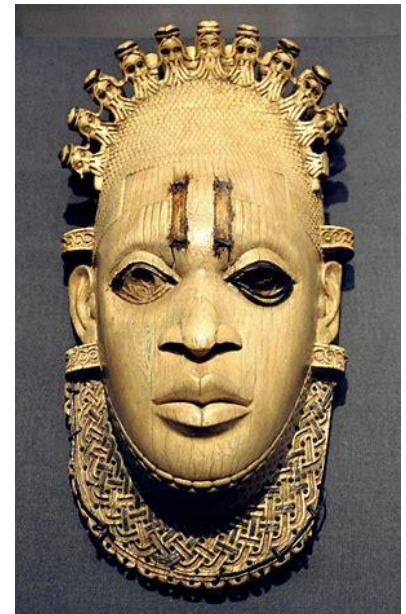
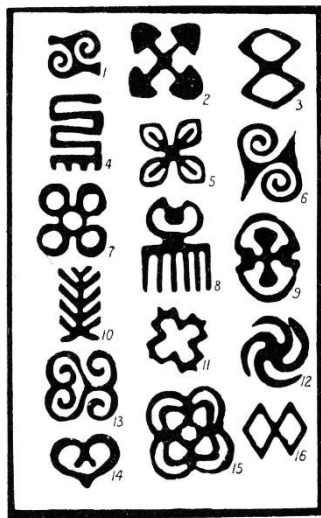


African Masks

Objectives

- To identify African patterns
- To compare traditional African Masks with modern artist Kimmy Cantrell
- To experiment with paper modelling and paper mache
- To experiment with painting techniques

African symbols known as **Adrinka** are found everywhere in Ghana



Benin Mask made of ivory

Kimmy Cantrell's work uses vibrant colours. His work tells a story. Kimmy's masks use asymmetry to challenge traditional definitions of beauty. He changes the shape and position of the eyes to show different emotions.



Key Vocabulary

sculpture	3D work of art
asymmetry	2 sides that are not the same
features	Parts of the face
Paper mache	Sculpting using paper and glue
construction	To build