

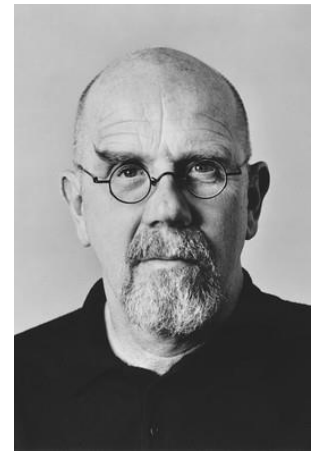
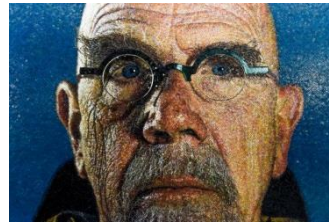
Self Portrait/Photorealism - Chuck Close

Objectives:

- To enlarge using a grid
- To experiment with photorealism techniques

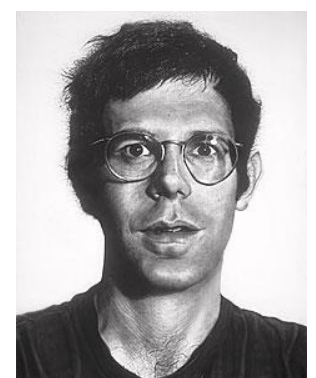
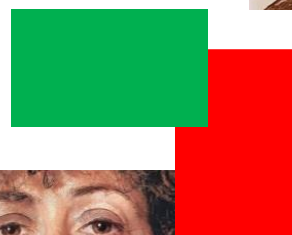
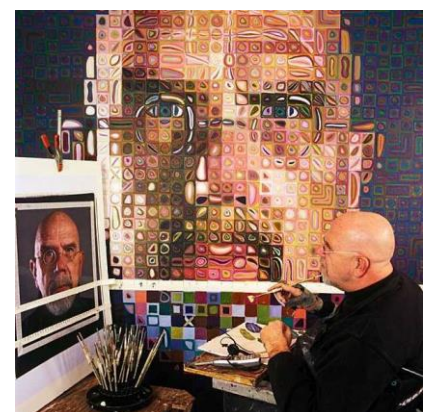
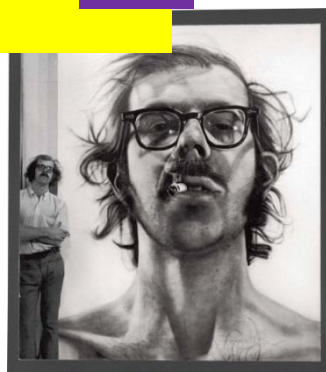
"I think I was driven to paint portraits to commit images of friends and family to memory. I have face blindness, and once a face is flattened out, I can remember it better."

-Chuck Close



Chuck Close (born July 5, 1940) is an American painter, artist and photographer who achieved fame as a photorealist, through his massive-scale portraits. He often paints abstract portraits of himself and others and most of his early works are very large portraits based on photographs, using Photorealism. He suffers from prosopagnosia (face blindness), and has suggested that this condition is what first inspired him to do portraits.

Key Vocabulary	
Grid	Used to work to scale, breaking down the image into small incremental units
Photorealism	A painting style which is characterized by the highly detailed depiction of ordinary life with the impersonality of a photograph
Self portrait	A portrait that an artist produces of themselves
Complementary colours	Colours which appear opposite each other on the colour wheel
Enlargement	To produce on a larger scale
Proportion	The relative size of parts in a whole
Observational Drawing	To draw as accurately as possible from observation



Useful websites:

<http://chuckclose.com/>